

Please note that the suggested locations shown for the proposed traffic signal and speed management features are approximate and may change as a result of feedback on these proposals and more detailed design work.



Proposed 40mph limit highlighted by traffic signs each side of the road and red coloured road surfacing with white '40' road marking.

Proposed 40mph limit highlighted by traffic signs on each side of the road

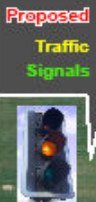
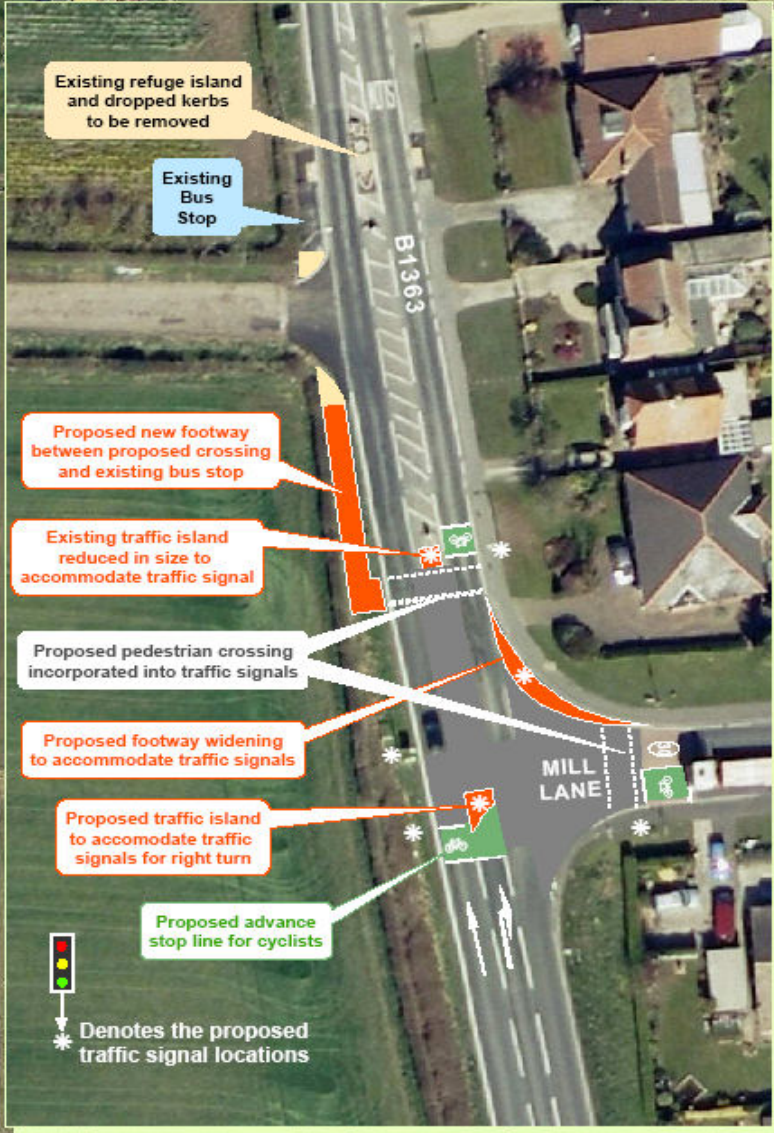
Existing street lighting upgraded and extended with taller columns to cover the extents of the 40mph limit. This should highlight the change in road environment and encourage drivers to observe the lower speed limit

NB - The proposed traffic signals would incorporate speed detection, so that the signals do not suddenly turn red when a vehicle is approaching without sufficient time to stop. Also, queue detection should ensure that the signals operate safely and efficiently

Existing 30mph limit on MILL LANE to remain in place. Proposed 40mph limit signs would be fixed on the back of the existing '30' signs

Existing street lighting upgraded and extended with taller columns to cover the extents of the 40mph limit. This should highlight the change in road environment and encourage drivers to observe the lower speed limit

Proposed 40mph limit highlighted by traffic signs each side of the road and red coloured road surfacing with white '40' road marking.



Proposed Traffic Signals

